

GEBERIT AQUACLEAN MERA CLASSIC FLOOR-STANDING WC

## QUICK GUIDE



### What you need for cleaning

#### Selecting suitable cleaning agents and cleaning equipment

---

The Geberit AquaClean cleaning set (art. no. 242.547.00.1) includes a ready-made cleaning agent that is optimal for cleaning all Geberit AquaClean surfaces.



#### CAUTION

Cleaning with aggressive descaling and cleaning agents  
Aggressive descaling and cleaning agents can cause surface damage.

- Only use Geberit AquaClean descaling agent in the device.
- Only use cleaning agents permitted by Geberit.

#### Geberit AquaClean consumables

---



Geberit AquaClean cleaning set (art. no. 242.547.00.1)



Geberit AquaClean descaling agent (art. no. 147.040.00.1)

#### Permissible cleaning agents

---



Only skin-friendly cleaning agents



Only liquid cleaning agents



Preferably water-diluted cleaning agents



Cleaning agents with a low acid content (e.g. heavily diluted citric acid)



Mildly foaming cleaning agents

#### Permissible cleaning equipment

---



Soft, fine-pored sponges



Lint-free, soft cloths which are free of dust

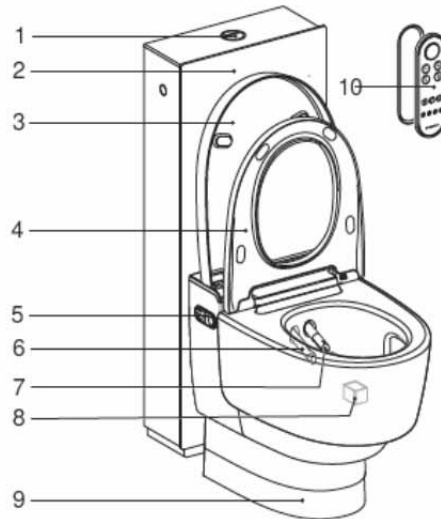


Toilet brush

## The device at a glance

### Geberit AquaClean Mera Classic floor-standing WC

- 1 Flush button
- 2 Frame
- 3 WC lid (optional)
- 4 WC seat ring (fixed on request)
- 5 Lateral control panel
- 6 Dryer arm
- 7 Spray arm
- 8 Ceramic honeycomb filter
- 9 Cover
- 10 Remote control with magnetic wall-mounted holder



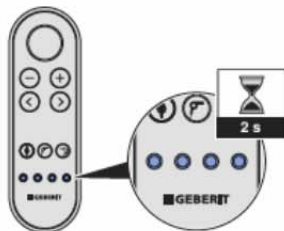
### Assigning the remote control

Press the <up> button on the lateral control panel and the <+> button on the remote control for approximately 30 seconds until <Pairing ok> appears on the rear display.



### Saving user profiles

Press and hold one of the <User profile> buttons for 2 seconds to save the current settings as the user profile for this button.



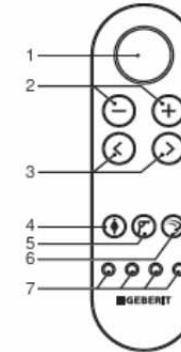
**i** Press the <User profile> button again to activate your user profile.

## The remote control at a glance

### Front side of the remote control

All functions for daily use can be operated from the front side of the remote control.

- 1 <Shower> button
- 2 <->/<+> buttons
- 3 <left>/<right> arrow keys
- 4 <Lady shower> button
- 5 <Dryer> button
- 6 <Toilet flush> button
- 7 <User profile> buttons

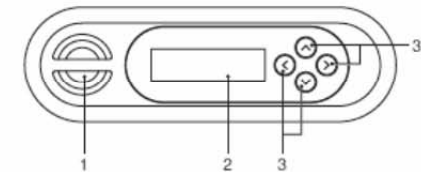


**i** User profiles allow you to access your personal settings directly. You can save 4 user profiles.

### Rear side of the remote control

Individual functions can be selected from the rear side of the remote control.

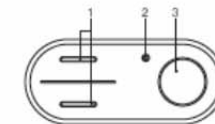
- 1 Battery compartment
- 2 LCD display
- 3 <up>/<down>, <left>/<right> arrow keys



### Lateral control panel

The shower toilet functions of the device can be operated from the lateral control panel.

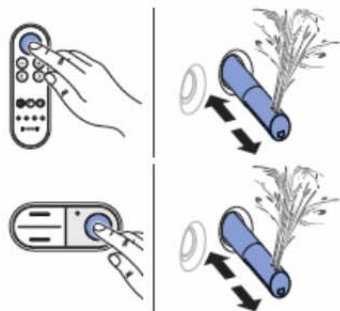
- 1 <up>/<down> buttons
- 2 Status LED
- 3 <Shower> button



## How to use the device

### Using the anal shower

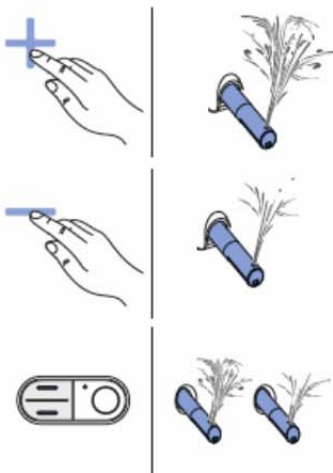
Press the <Shower> button once to switch on the anal shower.



**i** Press the <Shower> button again to stop the shower procedure early.

### Setting the spray intensity

Press the <+>/<up> or <->/<down> button to increase or decrease the spray intensity in stages.



**i** You can set the spray intensity in 5 stages.

### Using the Lady shower

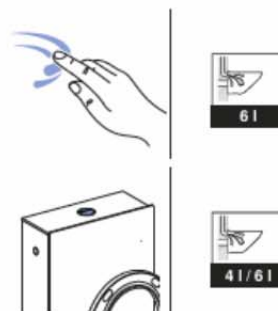
Press the <Lady shower> button once or the <Shower> button for 2 seconds to switch to the Lady shower.



**i** Press the <Lady shower> or <Shower> button again to stop the shower procedure early.

### Actuating the flush

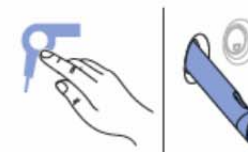
Press the <Toilet flush> button or the flush button to actuate the flush.



**i** Automatic flushing and rinsing can be switched on and off at any time in the basic settings.

### Using the dryer

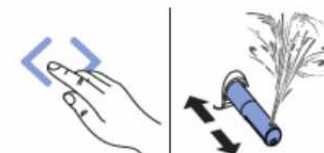
Press the <Dryer> button to switch on the dryer.



**i** Press the <Dryer> button again to switch off the dryer.

### Setting the spray arm position

Press the <left> or <right> button to move the spray arm forwards or backwards.



### Switching on the oscillating motion

Press the <left> and <right> buttons at the same time to start the oscillating motion.



**i** Press the buttons again to switch off the oscillating motion temporarily.

## Geberit AquaClean app

### Operating the shower toilet using the app

---

The following shower toilet functions can be executed via the Geberit AquaClean app:

- remote control of the Geberit AquaClean shower toilet
- adjustment of the device settings

The Geberit AquaClean app offers the following additional benefits:

- saving your personal settings on your smartphone
- support for care and maintenance of the device
- easy registration of your Geberit AquaClean shower toilet
- function films
- service and contact information

The Geberit AquaClean app is available free of charge for Android and iOS smartphones in the respective app stores.

iOS:



Android:



# taylordolman

tel: 0845 838 0600

email: [info@taylordolman.com](mailto:info@taylordolman.com)

[www.taylordolman.com](http://www.taylordolman.com)