



Overview:

This traditional Bobath style neurology couch has been designed for neurological assessment and treatment for both adults and children. The couch is extremely strong, with a large treatment surface to support both the patient and therapist for a wide range of treatment procedures. A wide variety of options are available to personalise the couch to individual user requirements.

Standard Features

- UK designed & manufactured
- Lifetime frame & 5 year parts guarantee
- Safe working load & lift capacity 320kg
- 16 year average lifespan
- Choice of electric or hydraulic operation
- Breathing hole & plug
- Adjustable backrest
- Very strong & rigid frame
- Large treatment surface
- Hardwearing antimicrobial vinyl
- Retractable heavy duty twin castor base
- Hoist clearance 14cm (5.5")

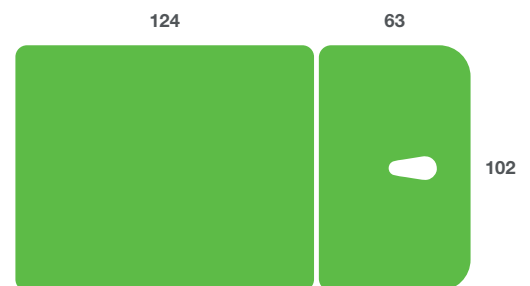


Model shown with optional Foot Ring Switch, Paper Roll Holder and Chrome Side Security Rails

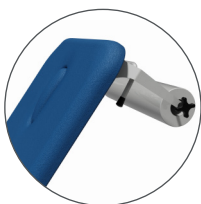
Overall Dimensions

Length: 189cm (74") approx
 Width: 102cm (40") approx
 Height: 42cm - 91cm (17 - 36") approx

Upholstery Dimensions



Options & Accessories



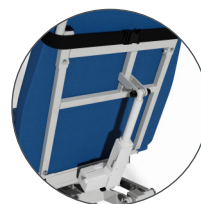
Paper Roll Holder



Side Security Rails Padded



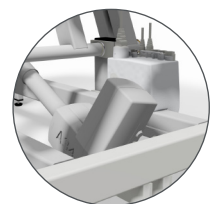
Large Castor Base



Motorised Backrest



Footswitch



Battery Backup



Operational Parameters



Model 40E - Electric Version

Model 40H - Hydraulic Version

Upholstery Vinyl - Phthalate Free

- Flame retardant to CRIB 5
- Independantly tested to verify effectiveness at reducing the spread of MRSA, E.coli and other similar bacteria and fungi
- Rated at 1,000,000 Martindale rubs without damaging or marking the top layer, making it suitable for all high traffic, heavy duty areas



Jasmine



Battleship



Cobalt



Cocoa



Grape



Mulled Wine



Pillarbox



Gingersnap



Candy



Applemint



Sapphire



Atlantic Blue



Lupin



Denim



Cool Blue



Rainforest



Wasabi



Citrus Green



Marigold



Almond

Product Benefits

- UK designed & manufactured with long-term support
- Lifetime frame and 5 year parts guarantee providing longevity of product life and value for money
- Safe working load of 320kgs to cater for extremely heavy patients
- Choice of hydraulic or electric height operation to suit user or environmental requirements
- Large treatment surface to support both patient and therapist for rolling and turning exercises
- Backrest adjusts from horizontal for various treatments up to 85° for supporting the patient in a sitting position
- Low patient transfer height of 42cm (17")
- Breathing hole and plug for prone treatments
- Retractable heavy duty twin castor base for ease of transport and positioning
- Wide choice of options, accessories and colours allow the couch to be customised to individual user requirements

Technical Standards

- Safe Working Load & Lifting Capacity 320kg (705lb / 50 Stone)
- IP Rating - IPx4
- EE Classification - MDD93/42/EEC Annex IX Class 1
- Electrical Standard - IEC601 Part 1 + 60601. P (EN)
- Vinyl flame retardant to CRIB 5 (BS 5852)
- Foam flame retardant to BS 5852: Part 2: 1982, Ignition Source 5 [CRIB 5]
- CE Marked
- Externally audited to ISO9001:2008 by LQRA

taylordolman

tel: 0845 838 0600
email: info@taylordolman.com
www.taylordolman.com

Plinth | Medical

