

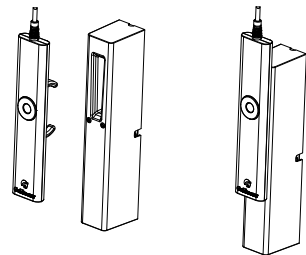


taylordolman



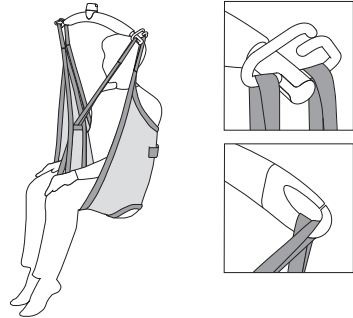
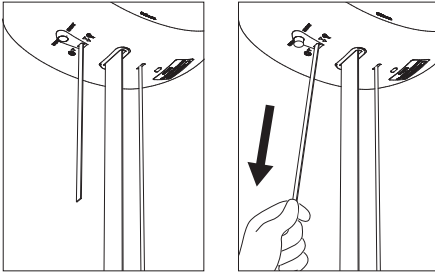
## Quick Guide – GH1/GH1 Q

- The ceiling hoist is switched on by pressing one of the buttons on the hand control.
- A green indicator lamp will show that the hoist is switched on and ready for use.
- If the indicator lamp shows yellow, this means that there is no main connection to the hoist.
- If the indicator lamp is yellow and the hoist is beeping when activated, there is a fault with the hoist.
- If the ceiling hoist does not switch on, this may be because the emergency stop has been activated – red strap (labelled with triangle symbol).
- The hoist does not need to be turned off – it switches off automatically after approximately two minutes without activation.
- The hoist recharges when the hand control is placed in the charging station with the power supply turned on (3 beeps for charging). The position of the lifting hanger does not affect charging. Charging will always take place irrespective of the height of the lifting hanger.
- The hoist's lifting capacity will be marked on the hoist, e.g., 205 kg. This means that the hoist may be used for loads up to 205 kg. Note however that the rail system or the sling may have a lower lifting capacity. The load may not exceed the lowest lifting capacity.
- The GH1Q features a quick-release system that makes it very simple to click-on and click-off the lifting module from the rails.
- If you have any questions regarding instructions and training, ask your environmental health & safety coordinator, human resources manager or your line manager.



taylordolman tel: 0845 838 0600 email: [info@taylordolman.com](mailto:info@taylordolman.com)

Guldmann™



## Safety functions

### Emergency stop

- One pull on the red strap. Use only in emergencies, when there is an immediate need to stop the hoist.
- When the emergency stop is activated, only the hoist's emergency lowering device will function.
- Deactivate the emergency stop by pressing the "stop" button (yellow button) on the hoist. Then press one of the buttons on the hand control unit twice.

### Emergency lowering device

This is activated by a prolonged pull on the red strap. Use only in an emergency. This function allows the patient to be lowered when the hoist has failed to work.



Scan here for user manual,  
etc. concerning use of the  
GH1/GH1 Q.

## Accessories

### Lifting hanger

Place the sling straps in the hooks. Check that the straps have been correctly attached to the hanger.

### Lifting sling

We recommend using a lifting sling with two or four loop attachments for attaching the sling to the lifting hanger. The sling must always correspond with the hoist's lifting capacity. Always use individually marked CE products. In case of doubt concerning the use of a lifting sling, please contact your supplier.

## Daily cleaning and maintenance

Clean with a damp cloth and ordinary detergent. Do not use strong acids, bases or alcohol when cleaning. See user manual.

| Time to care |

taylordolman

tel: 0845 838 0600  
email: [info@taylordolman.com](mailto:info@taylordolman.com)  
[www.taylordolman.com](http://www.taylordolman.com)