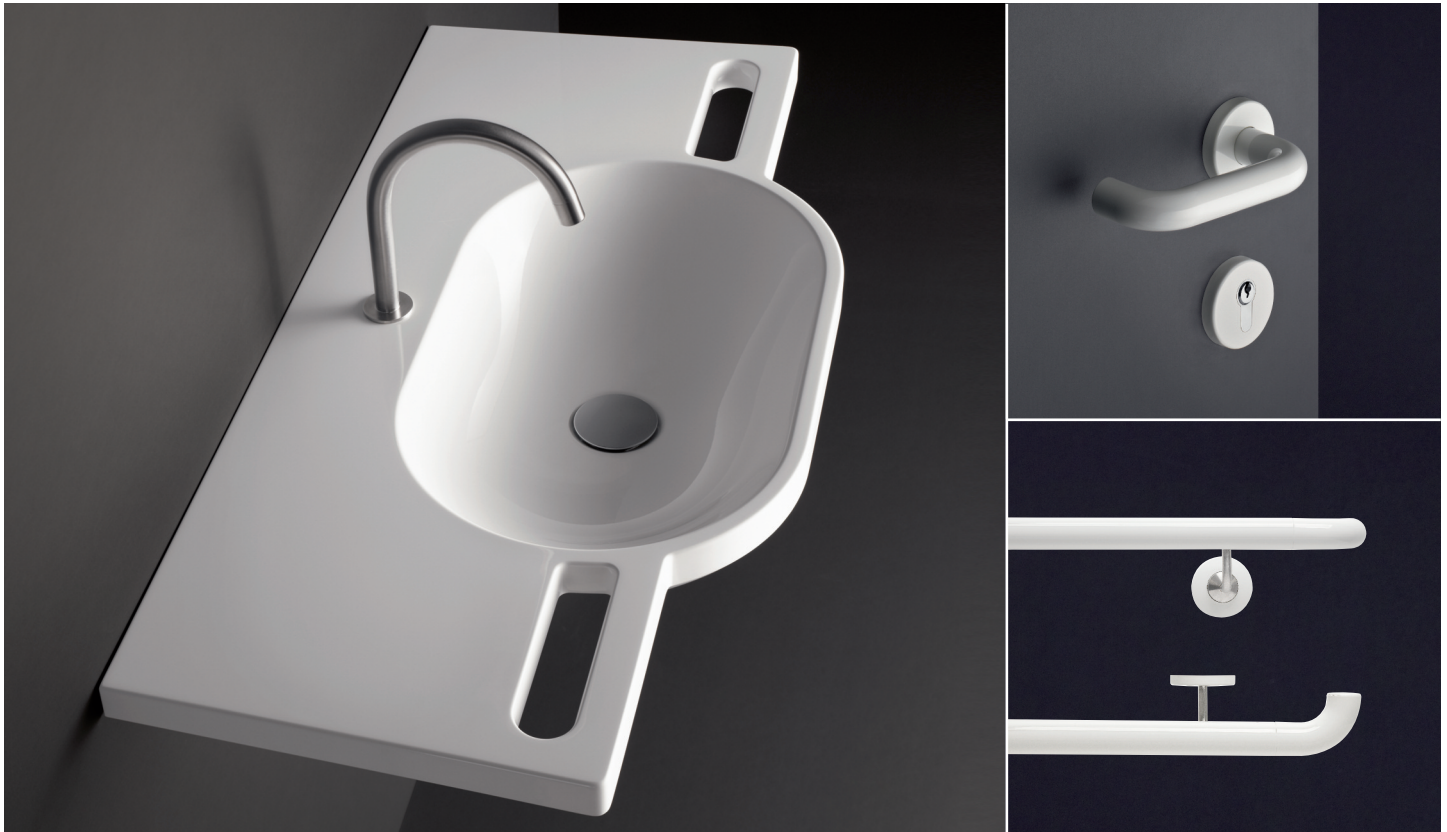


HEWI (UK) Ltd is a 100% owned subsidiary of HEWI Heinrich Wilke GmbH, supplying architectural ironmongery, handrail and balustrading, bathroom accessibility products including bathroom accessories.

HEWI

from **taylordolman**

1. Sanitary and Accessibility –Design and Function for All
2. Architectural Handrails and Balustrades, Contemporary Design To Meet Regulations
3. Door Furniture for ALL to Handle



SEMINAR 1	SEMINAR 2	SEMINAR 3	ALSO AVAILABLE
<ul style="list-style-type: none"> • This seminar highlights the current market for accessibility/sanitary products and illustrates how contemporary design can be used to comply with current regulations and requirements for people with disabilities. • Discuss the Demographic changes and the subsequent impact on design demands • Highlight Rules, Regulations and appropriate solutions • Introduce Occupational Therapists support network • Offer planning templates to meet BS 8300 • Summarise product 	<ul style="list-style-type: none"> • This seminar is to understand why compliance with regulations is critical and highlight requirements for the specification of safe and aesthetically pleasing handrails and balustrades. • Gives facts and figures • Highlight requirements for Building Regulations • Highlight relevant British Standards • Equality Act, what has it replaced? • Offer Design Options • LRV (Light Reflectance)- what it is and why. 	<ul style="list-style-type: none"> • This seminar highlights some of the perceived problems with regard to door furniture within the; Equality Act, BS 8300:2009 + A1:2010, Approved Document M. And to offer solutions to these problems. • Brief explanation / history of The Equality Act / BS8300 & Doc M, where we are and how we got there. • Highlight the various requirements within these documents with regard to door furniture. • LRV (Light Reflectance) - what it is and why. • Equality & Human Rights Commission, what is it? And what is its aim? 	<ul style="list-style-type: none"> • Technical literature
			DURATION
			<ul style="list-style-type: none"> • 45 minutes
			CORE CURRICULUM
			<ul style="list-style-type: none"> • Being Safe • Climate • External management • Internal management • Compliance • Procurement and contracts • Designing and building it • Where people live • Context • Access for all • CPD03785 HEWI

taylordolman

tel: 0845 838 0600
 email: info@taylordolman.com
www.taylordolman.com