

A white shower curtain hangs from a silver rod in the foreground, partially obscuring a blurred waterfall in the background. The scene is set outdoors with green foliage visible behind the waterfall.

taylordolman

Curtain up for a new
showering quality.

Cleanique[®]

The Shower Curtain



Rolf Zimmermann, managing director of the ROPIMEX enterprise, in a dialog with graduate engineer Mr. Manfred Schneider, responsible for the material composition of Cleanique®.



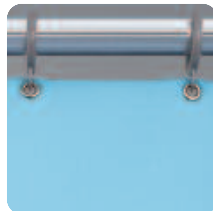
Advantages that will convince you:



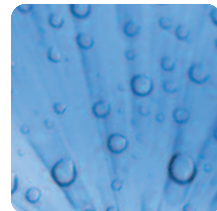
antibacterial



no mould stains
no mildew



seamless



water-repellent



does not cling
to the skin



flame resistant



recyclable



economic



machine wash



tear-proof



Always “good for intelligent products”



For more than 30 years, Ropimex has successfully positioned itself in the market with a variety of innovative products and effective solutions for hospitals, clinics, rehabilitation centres, nursing homes for the elderly and medical practices.

During this time, a variety of systems was created that offers the optimum in individual application options. **ropimex**® products ensure an extremely long service life. More than 70,000 satisfied customers worldwide are the best references we can give. The well-founded know-how and research done by **Ropimex** focusing on effective bathroom hygiene led to the development of the unique and innovative **Cleanique**® shower curtain. Thus, it can effectively counter a spreading of bacteria and mould on surfaces.

The sum of its unique features gives **Cleanique**® an unparalleled position in the market, meeting all demands on modern equipment in healthcare. This closes the circle of continually good applications.



No odour



very long product life

Hygiene:

1. Antibacterial
2. No mould stains, no mildew
3. No seams – made from one piece
4. Does not absorb water –
Reduces room moisture
5. Does not cling to the skin,
dermatologically tested
6. No formation of unpleasant odour
resulting from material composition or
the action of microorganisms

Safety and care:

7. Pleasantly smooth and soft to the
touch, hardly wrinkles
8. Flame-resistant
9. Use a sponge and household detergent
for strong soiling
10. Disinfectant-proof

Quality and environment:

11. extremely long product life
12. tear-proof
13. recyclable
14. lightproof
15. made in 66538 Neunkirchen/Germany



„Cleanique®'s quality
pays off!“

Head of Purchasing

Safety with a long-term benefit.



Quality and cost-conscious decision-makers in purchasing know about the long product life of all **ropimex**[®] products. Every product decision for the hygiene sector also implies a sense of responsibility as well as cost awareness. The strong usage benefits of **Cleanique**[®] ensure an optimum cost-effectiveness.



extremely long product life



economic



tear-proof



flame-resistant



recyclable



„Cleanique® – absolute
hygiene for our patients!“

Head of Nursing Services

No fear of contact.



Cleanique® means carefree shower pleasures because the material will not cling to the skin.

Active, antimicrobial components ensure a permanent surface effect preventing the formation of odour, mould stains and mildew for a maximum of hygiene.



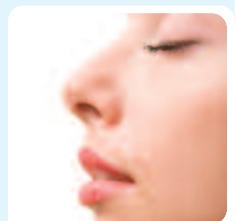
Antibacterial



No mould stains
No mildew



Seamless



No odour



„Cleanique® - for a relaxed and comfortable showering sensation!“

Male nurse with patient



Velvety soft to the touch.



Cleanique®'s special material composition ensures three benefits for patients and nursing staff: The shower curtain is very pleasant to the touch. Water drips off completely, which prevents the formation of mould stains and mildew - this also applies to the splash guard.



does not cling to the skin



No mould stains
No mildew



antibacterial



water-repellent



machine wash



„Only the best for
our residents.“

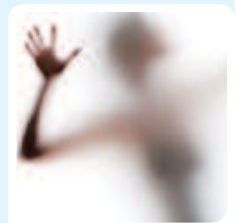
Director of Nursing Home for the Elderly

Harmony and well-being.



For the residents in a nursing home for the elderly, hygiene in the bathroom area is very important. The fresh and lightproof colours of **Cleanique®** further contribute to a positive climate.

Cleanique® clearly fulfils these demands.



Does not cling to the skin



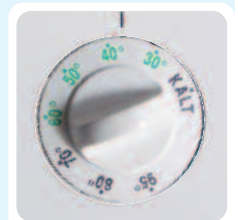
No mould stains
No mildew



Antibacterial



Flame-resistant



machine wash



Water-repellent

„With Cleanique® , it's simply better, faster and cleaner!“

Head of Cleaning Service

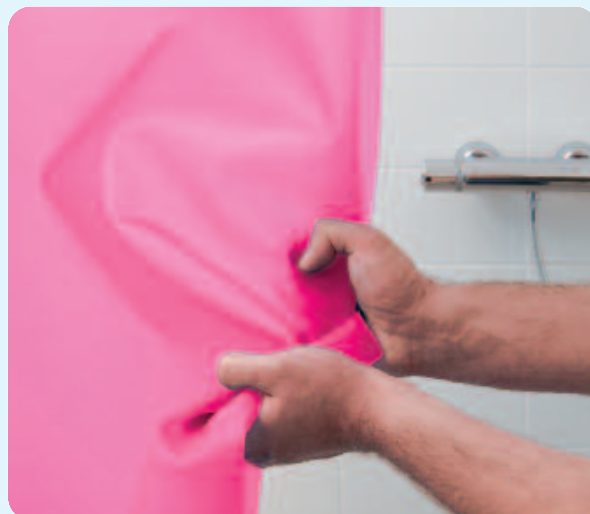


Cleanliness from morning to night.

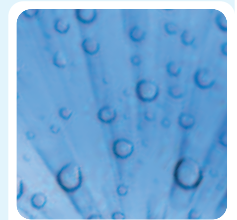


Where hygiene and total cleanliness are a stringent necessity, the easy-to-clean properties of **Cleanique®** will quickly be appreciated.

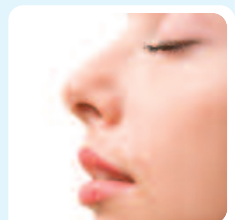
The **seamless design** and its microbial and fungicide features prevent mould stains, mildew and the formation of odour. The material does not absorb moisture and hardly crinkles. A minimum of care ensures a maximum of hygiene.



No mould stains
No mildew



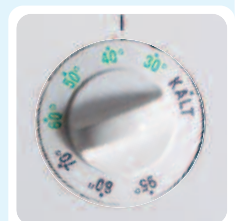
Water-repellent




No odour



Seamless



machine wash

A man with grey hair and a wide smile is peeking from behind a large, vertical blue sheet that covers most of the frame. He is in a shower stall with white tiled walls. To his right, a silver shower head is mounted on a vertical bar. Below the shower head, there is a silver shower tray. The man's hands are visible at the top and bottom of the blue sheet, holding it in place. The overall scene is bright and clean, suggesting a fresh and hygienic environment.

„I want Cleanique® for my home.“

Patient

Article no.:

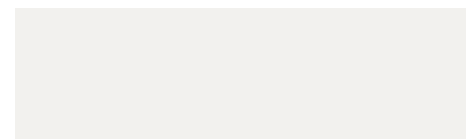


More information on the original:

Cleanique® consists of a specially developed type of film the basis of which is a thermoplastic polyether-polyurethane. This base material is combined with a patented antibacterial and fungicide substance. The special processing method, which was developed to meet **ROPIMEX's** strong commitment to quality, ensures that this substance is released only gradually, which reliably protects the surface from bacterial contamination and mildew attack. Stabilisers against ultraviolet radiation prevent yellowing of the material. The fabric is 100 % recyclable.

Cleanique®
The Shower Curtain

Samples



Velvet white*



Azure*



Light green*



Orange*



Erica red*

Curtain dimensions,

Width x height:

100 cm x 80 cm
120 cm x 80 cm
120 cm x 180 cm
120 cm x 200 cm
180 cm x 200 cm
240 cm x 200 cm
Roll width 200 cm

Other dimensions available on request.

Curtains come with eyelets, eyelet spacing approx. 14 cm.

Delivery without curtain rings.

Antimicrobial effect tested in accordance with ASTM E2180-01 (Staphylococcus Aureus, Pseudomonas Aeruginosa, Aspergillus niger, Candida albicans).

Fire protection class:

B1

Skin contact: FDA approved (ISO 10993).

Water-repellent according to DIN 53888.

Lightfastness according to DIN 54004.

Fastness to rubbing according to DIN 54021.

Tear strength according to DIN EN 10002.

Approved antimicrobial substance in accordance with the United States Toxic Substance Control Act (TSCA) no. 179238, approved in the EC under ELINCS no. 442-570-3 and in Japan under (ENCS) 1-723 and 1-9.

* Subject to deviations in colour (printing related),



dolphin aid and ROPIMEX
help handicapped children:

The efficiency of dolphin therapy is clearly proven by an independent European scientific study from the year 2003.

Since it was established in 1995 by Kirsten Kuhnert, dolphin aid was able to support and advise thousands of families.

Thus, dolphin aid enabled proven and significant progress in the development of a great number of children.

www.dolphin-aid.de



Contribute to life.

For many years now, ROPIMEX is also committed to a variety of social institutions and projects that are worthy of support. Therefore, we donate 1,- € from the sale of each Cleanique® shower curtain dolphin aid. This way, you contribute to a good cause by buying a good product.

ropimex®
Universal screen systems

taylordolman

tel: 0845 838 0600

email: info@taylordolman.com

www.taylordolman.com