



GH1

– single rail system

The GH1 ceiling hoist system is designed to meet the full range of day-to-day lifting needs in private homes, care homes and institutions. It takes up very little space, and is very easy to use with the full range of Guldmann lifting slings and other lifting accessories.

The GH1 lifting module quickly and safely lifts users weighing as much as 205 kg, operated by an easy-to-use hand control.

The single rail system comprises a single rail in which the ceiling hoist runs - it will have to be placed where the lifting of the user is needed – e.g. over bed or toilet.

The lifting module is quickly recharged by placing the hand control in the GH1 recharging dock. A fully charged lifting module can cope with more than 55 lifts of 85 kg.

Both the GH1 lifting module and the rail systems blend easily into the décor of any space in which they are used. The lifting module is delivered with a choice of 4 different covers as standard.



GH1 package – single rail system 4 meter

The GH1 single rail package consists of 1 rail of 4 meter together with the GH1 ceiling and a standard hanger. The system is including a recharging dock where the hand control is placed for recharging. The system/ package can be delivered for mounting either on wall or direct in the ceiling – or alternatively for installation on up-right support brackets or with lowered ceiling brackets (1000mm).

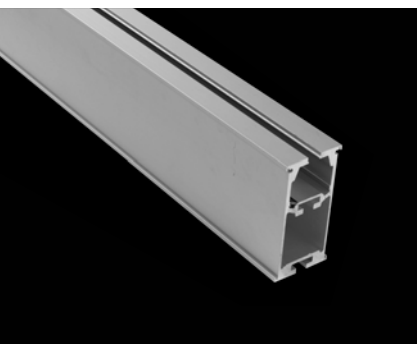
GH1:
4 m single rail system
complete with wall brackets
 Item no.551125

GH1:
4 m single rail system
complete with std. ceiling
brackets
 Item no.551126

GH1:
4 m single rail system
complete with ceiling brackets
– lowered (1000 mm)
 Item no.551127

GH1:
4 m single rail system
complete with upright
support brackets
 Item no.551128

Optional: slings



| Time to care |



GH1

– room covering system

The GH1 ceiling hoist system is designed to meet the full range of day-to-day lifting needs in private homes, care homes and institutions. It takes up very little space, and is very easy to use with the full range of Guldmann lifting slings and other lifting accessories.

The GH1 lifting module quickly and safely lifts users weighing as much as 205 kg, operated by an easy-to-use hand control.

The room covering system makes it possible to lift the user to and from any place in the room and is the optimum solution in rooms where daily lifts are needed.

A room covering system saves space and provides an extremely high degree of freedom. All furniture can be placed as desired.

The lifting module is quickly recharged by placing the hand control in the GH1 recharging dock. A fully charged lifting module can cope with more than 55 lifts of 85 kg.

Both the GH1 lifting module and the rail systems blend easily into the décor of any space in which they are used. The lifting module is delivered with a choice of 4 different covers as standard.



GH1 package – room covering system 4 x 4 meter

The GH1 room covering package consists of 3 rails of 4 meters – 2 supporting rails and 1 traverse rail – together with the GH1 ceiling hoist and a standard lifting hanger. The system is including a recharging dock where the hand control is placed for recharging. The system/ package can be delivered for mounting either on wall or direct in the ceiling – or alternatively for installation on up-right support brackets or with lowered ceiling brackets (1000 mm).

GH1: 4 x 4 m room covering system complete with wall brackets

Item no. 551121

GH1: 4 x 4 m room covering system complete with ceiling brackets – lowered (1000 mm)

Item no. 551123

GH1: 4 x 4 m room covering system complete with std. ceiling brackets

Item no. 551122

GH1: 4 x 4 m room covering system complete with upright support brackets

Item no. 551124

Optional: slings



| Time to care |



GH1

– free-standing rail system

The GH1 ceiling hoist system is designed to meet the full range of day-to-day lifting needs in private homes and care homes. It takes up very little space, and is very easy to use with the full range of Guldmann lifting slings and other lifting accessories.

The GH1 lifting module quickly and safely lifts users weighing as much as 205 kg, operated by an easy-to-use hand control.

The free-standing rail system is ideal for here-and-now lifting needs. The rails are easy to adjust in both height and width and provides a simple way to deal with any

temporary need for lifting help. The entire system can be set up – and taken down again – in only 10 minutes, with no tools needed.

The lifting module is quickly recharged by placing the hand control in the GH1 recharging dock. A fully charged lifting module can cope with more than 55 lifts of 85 kg.

Both the GH1 lifting module and the rail systems blend easily into the décor of any space in which they are used. The lifting module is delivered with a choice of 4 different covers as standard.



GH1 package – Free-standing rail system

The GH1 Free-standing rail system package consists of 2 height adjustable legs with stabilizing “feet” and a single rail – a GH1 ceiling and a standard lifting hanger. The system is inclusive of a recharging dock where the hand control is placed for recharging. The height of the legs can be adjusted from 210 cm – 280 cm – and the width from 250 cm – 390 cm.

GH1: Free-standing rail system

Item no. 551129

Optional:

- Bags for transporting and storage of legs and rail
- Slings



| Time to care |